



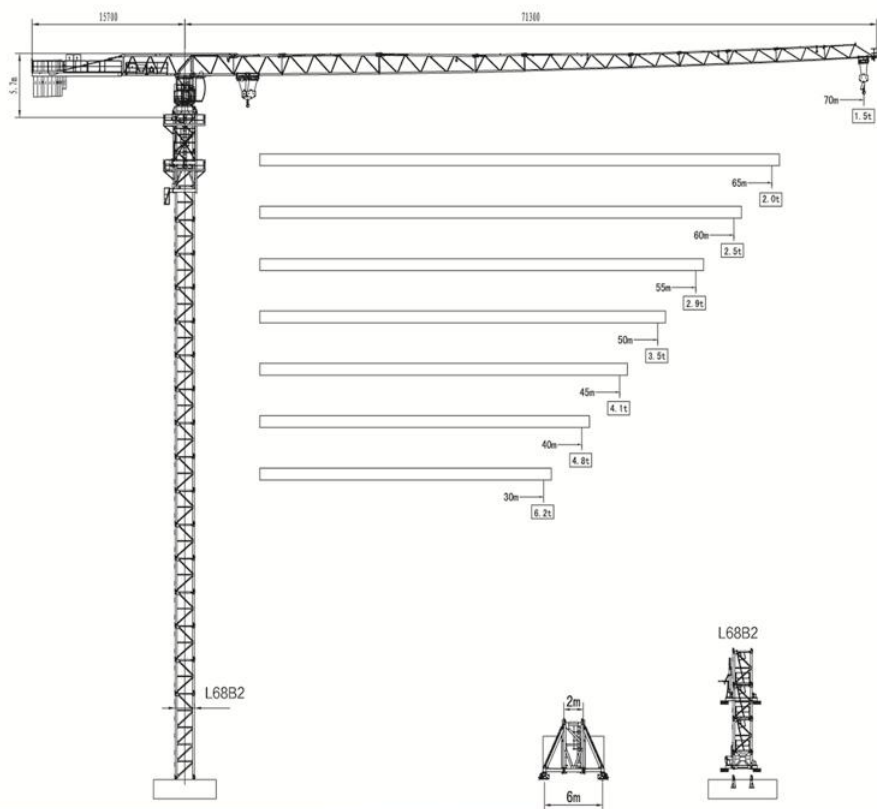
平头式塔式起重机 设备配置与技术参数

QTZ160 (PT7015)

本数据仅供参考，如有更改，恕不另行通知

This data is for informational purposes only, and is subject to change without prior notice

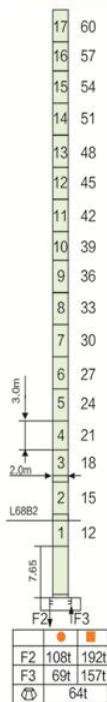
外形尺寸 Outline Dimensions



载荷特性表 Load Diagrams 10t

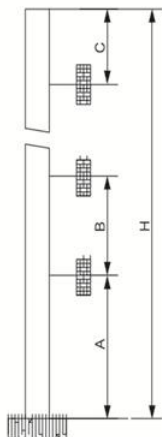
R(m)	Fall	RC _{max} (m)	C _{max} (t)	10	15	20	25	30	35	40	45	50	55	60	65	70
70m		11.73	10.0	10.0	7.62	5.58	4.35	3.53	2.95	2.51	2.17	1.90	1.68	1.49	1.33	1.20
		22.48	5.0	5.0	5.0	5.0	4.65	3.83	3.25	2.81	2.47	2.20	1.98	1.79	1.63	1.50
65m		14.00	10.0	10.0	9.20	6.76	5.30	4.33	3.63	3.11	2.70	2.38	2.11	1.89	1.70	
		26.84	5.0	5.0	5.0	5.0	5.0	4.63	3.93	3.41	3.0	2.68	2.41	2.19	2.0	
60m		15.79	10.0	10.0	10.0	7.70	6.05	4.95	4.16	3.58	3.12	2.75	2.45	2.20		
		30.28	5.0	5.0	5.0	5.0	5.0	5.0	4.46	3.88	3.42	3.05	2.75	2.50		
55m		16.58	10.0	10.0	10.0	8.11	6.38	5.23	4.40	3.78	3.30	2.92	2.60			
		31.79	5.0	5.0	5.0	5.0	5.0	5.0	4.70	4.08	3.60	3.22	2.90			
50m		17.95	10.0	10.0	10.0	8.83	6.95	5.70	4.81	4.14	3.62	3.20				
		36.11	5.0	5.0	5.0	5.0	5.0	5.0	5.0	4.44	3.92	3.50				
45m		18.74	10.0	10.0	10.0	9.24	7.28	5.98	5.04	4.34	3.80					
		35.92	5.0	5.0	5.0	5.0	5.0	5.0	5.0	4.64	4.10					
40m		19.33	10.0	10.0	10.0	9.55	7.53	6.18	5.22	4.80						
		37.07	5.0	5.0	5.0	5.0	5.0	5.0	5.0	4.50						
30m		19.38	10.0	10.0	10.0	9.58	7.55	6.20								
		37.16	5.0	5.0	5.0	5.0	5.0	5.0								

塔身截面 Masts



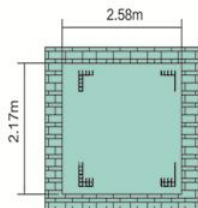
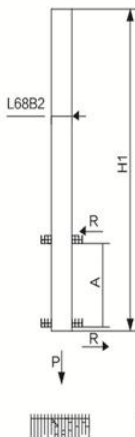
- 工作状态支反力 Reactions in service
- 非工作状态支反力 Reactions out of service
- ⊕ 不含平衡重及压重塔机重量 Total weight of free standing crane (exclude Counter weight & ballast)

附着位置及塔机高度 Anchorage



Mast	A	B	C	H
L68B2	48m	36m	45m	195 >195m*

附着道数: Number of tie collar=(H-A-C)/B+1



	H1	A	R	P
L68B2	34m	12.2m	21t	82t

机构 Mechanisms 10t

名称	机构代号	工作速度	m/min	起重量(t)	容绳量(m)	电机额定功率 (kW)
起升 Hoisting	45LVF25 ☆	双绳 2 fall	0-45	5.0	550 (5层)	45
			0-90	2.5		
		四绳 4 fall	0-22.5	10		
			0-45	5.0		
变幅机构 Trolleying	6JXF5	0-63			5.5	
回转机构 Slewing	JH12	0-0.7			5.5 × 2	
电源 Power	380V (± 10%) / 50Hz					

*请与制造商联系 contact us please

☆标准配置 standamd configuration



山东大汉建设机械股份有限公司

地址：山东省济南市章丘区明水经济开发区赭山工业园

电话：+86 (531) 83260789

网址：www.dhtj.com

邮编：250200

Shandong Dahan Construction Machinery Co.,Ltd.

Add : Zheshan Industrial Part,Mingshui Development
Zone,Zhangqiu,Jinan City,Shandong Province,China

TEL : +86 (531) 83260789

Web : [http:// www.dhtj.com](http://www.dhtj.com)

ZIP CODE : 250200